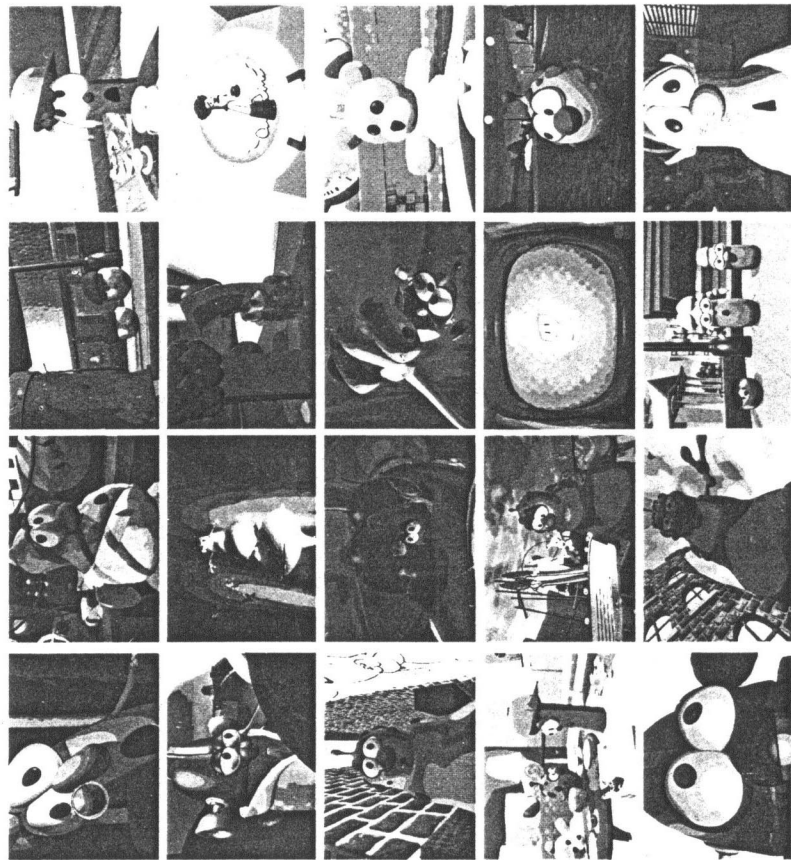
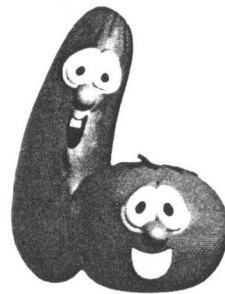


Play care / The Illustrated Word
©1997



PUZZLER
RULES!



VeggieTales™ PUZZLER™

PREPARING THE DECK/SETTING UP THE GRID

1. Flip over every other card in the deck.
2. Shuffle the cards.
3. Lay out an 8 x 5 grid.



PLAYING THE GAME

Each deck is comprised of 40 cards with images on both sides. There are 20 pictures in each deck. Each picture has been cut into 4 pieces, (cards.) Simply put, it takes 4 cards to form a complete picture.

Once you have set up the playing grid, randomly select a playing order and begin the game. When it is your turn, flip over one card on the playing grid then sort through the grid for 4 cards that collectively form a picture. After you have had a reasonable amount of time to study the grid, (approximately 30 seconds), move on to the next player.

Whenever you see 4 cards that you think form a picture shout "PUZZLE", (even if it is not your turn), then take the cards off the grid, flip over the timer and attempt to arrange the cards into a picture before time runs out. If you are right, (they form a

PUZZLE!



Play care

picture), you get to keep the cards. If you are wrong, (they don't form a picture), return the cards to the playing grid and give yourself one *STRIKE*.

If the 4 cards you have chosen form a picture, but time runs out before you can figure out how to properly arrange them, take the cards out of play, (put them in a discard deck), and give yourself one *STRIKE*.

WHEN ONLY 4 CARDS ARE LEFT, whoever flips up the card needed to complete the last picture on the grid gets the cards, unless the player cannot figure out how to piece the cards together within 15 seconds. In that case the cards are placed in a discard deck.

IF YOU GET 3 STRIKES YOU ARE OUT OF THE GAME! The player holding the most cards at the end of the game is the winner.

TEAMS: There is no limit to the number of players allowed on a team. Each player on a team gets a turn to flip over a card on the grid. Other than that the rules are the same.

PUZZLER SOLITAIRE: You must find a puzzle after flipping over 3 cards or the game is over. The time limit is optional. Other than that the rules are the same.

QUICK PLAY: Select 4 complete pictures from the deck, (16 cards), then prepare and shuffle the deck, lay the cards out in a 4 x 4 grid and begin the game.

SUPER PUZZLER: Combine, prepare, and shuffle both decks then lay the cards out in a 10 x 8 grid and begin the game.

© 1997 Playcare, Inc.

All Rights Reserved

Published by The Illustrated Word, SAN MARCOS, CA.

VeggieTales is a registered trademark of Big Idea Productions, INC, CHICAGO, IL.

Puzzler is a trademark of Playcare, Inc.

2525 Southport Way, Suite 'C'

National City, CA 91950

